

# ASSEMBLY INSTRUCTIONS



## Office Boffins

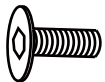
A-5 PCS



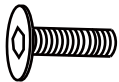
B-1 PC



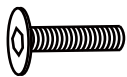
C-4 PCS  
20 mm



D-6 PCS  
25 mm



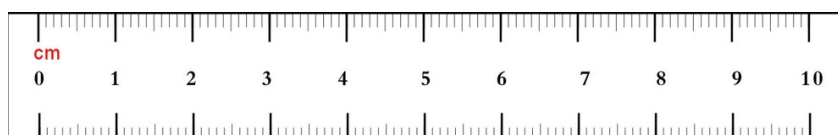
E-4 PCS  
30 mm



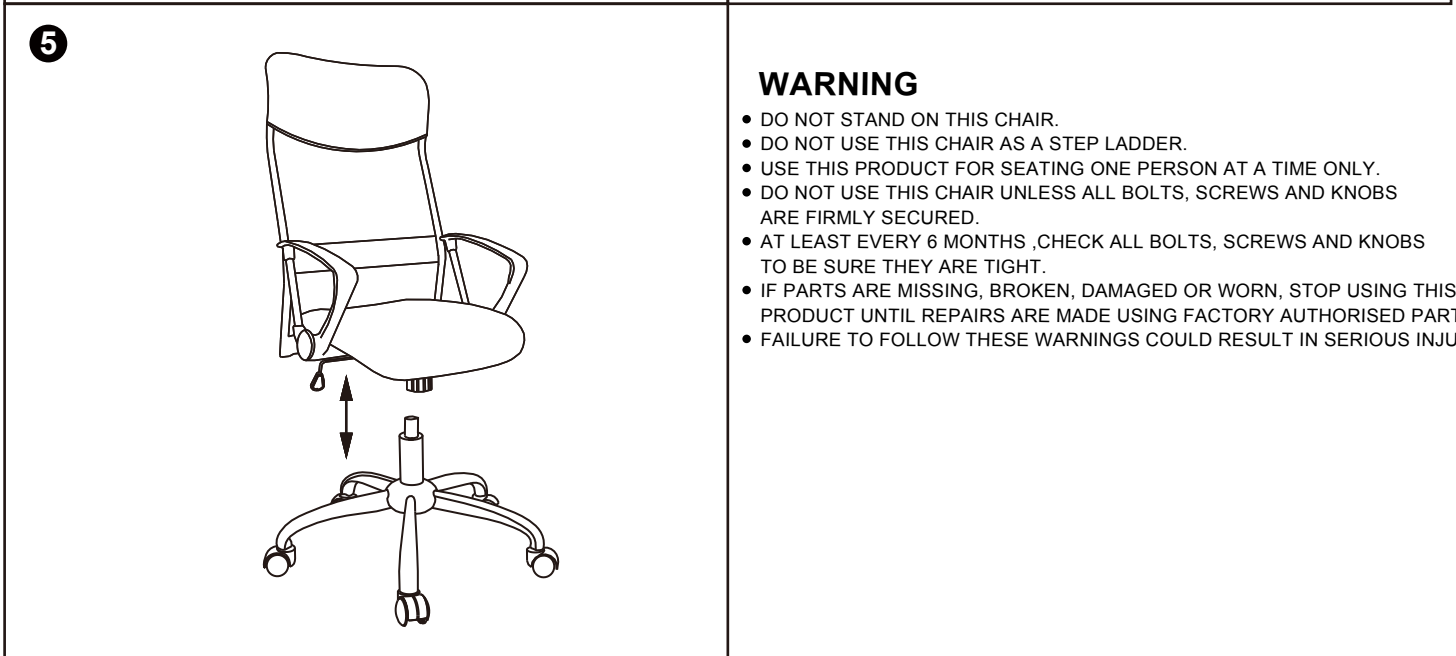
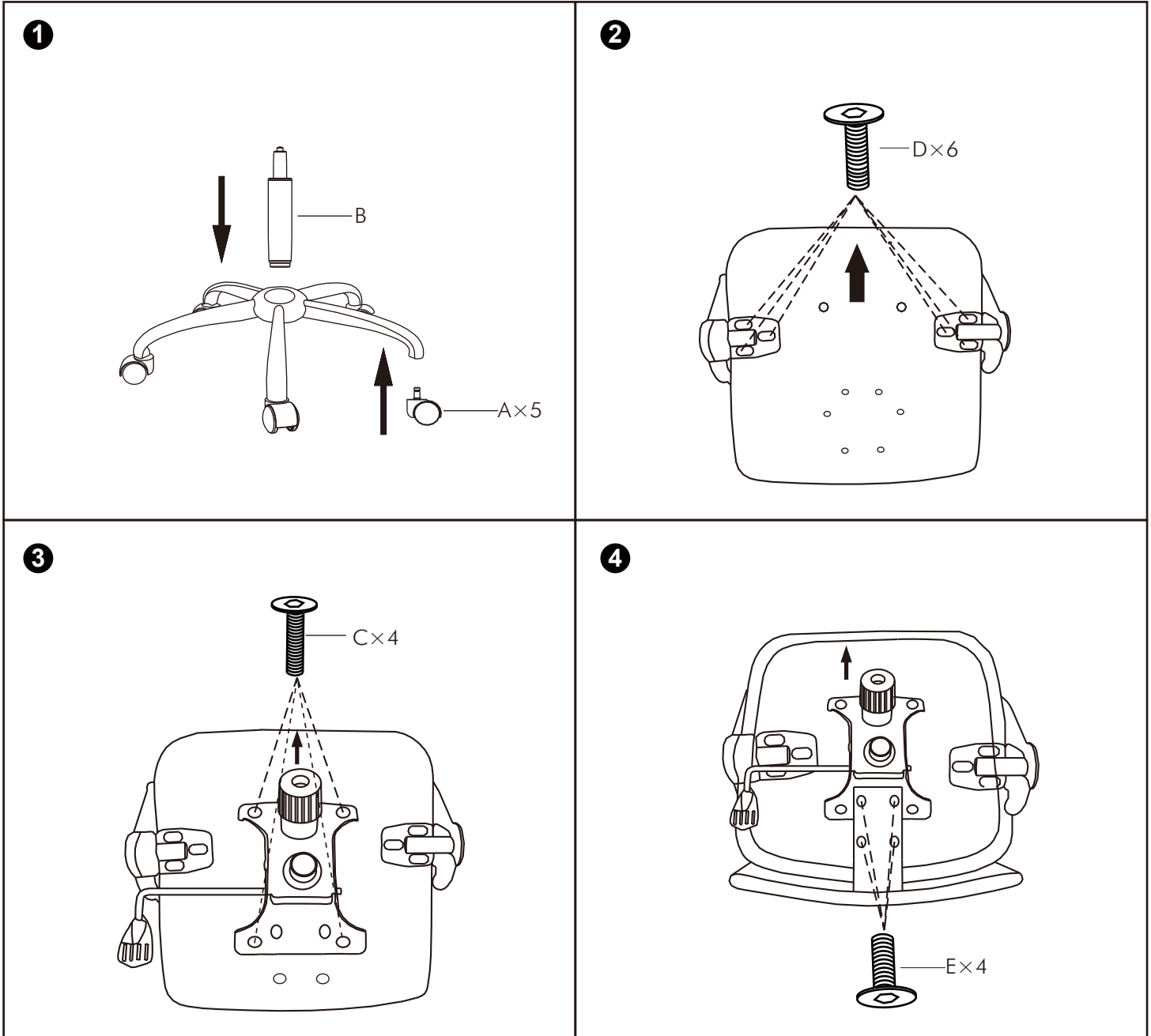
F-1 PC



## ECHM001



**Do not tighten bolts fully until you have completed assembly.  
DO NOT USE A POWER DRILL TO TIGHTEN THE SCREWS.  
TIGHTEN BY HAND WITH THE ALLEN KEY PROVIDED.**



**WARNING**

- DO NOT STAND ON THIS CHAIR.
- DO NOT USE THIS CHAIR AS A STEP LADDER.
- USE THIS PRODUCT FOR SEATING ONE PERSON AT A TIME ONLY.
- DO NOT USE THIS CHAIR UNLESS ALL BOLTS, SCREWS AND KNOBS ARE FIRMLY SECURED.
- AT LEAST EVERY 6 MONTHS ,CHECK ALL BOLTS, SCREWS AND KNOBS TO BE SURE THEY ARE TIGHT.
- IF PARTS ARE MISSING, BROKEN, DAMAGED OR WORN, STOP USING THIS PRODUCT UNTIL REPAIRS ARE MADE USING FACTORY AUTHORISED PARTS.
- FAILURE TO FOLLOW THESE WARNINGS COULD RESULT IN SERIOUS INJURY.