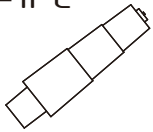


ASSEMBLY INSTRUCTIONS

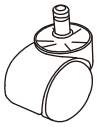


Office Boffins

A-1PC



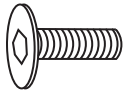
B-5PCS



C-1PC

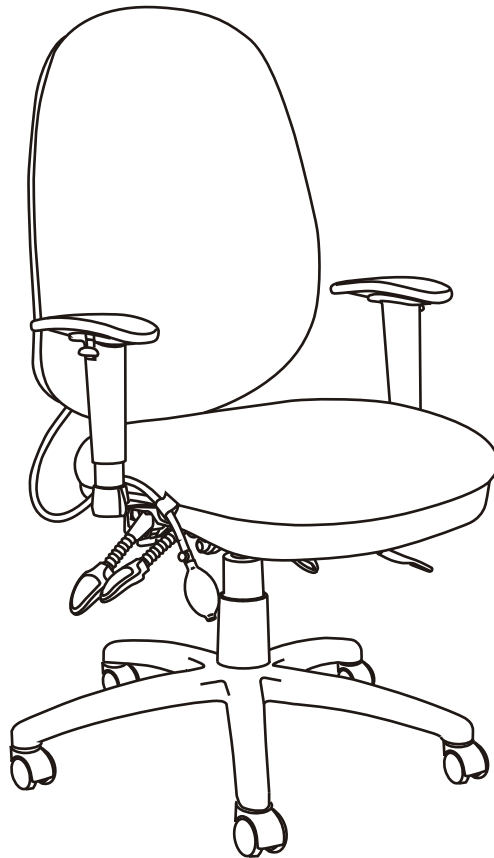


D-6PCS
(25mm)



PRE-INSERTED

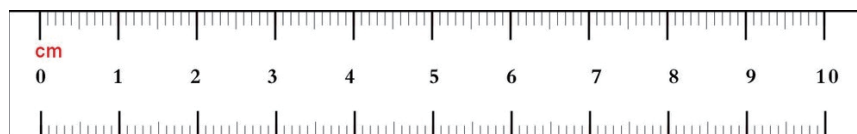
E-1PC



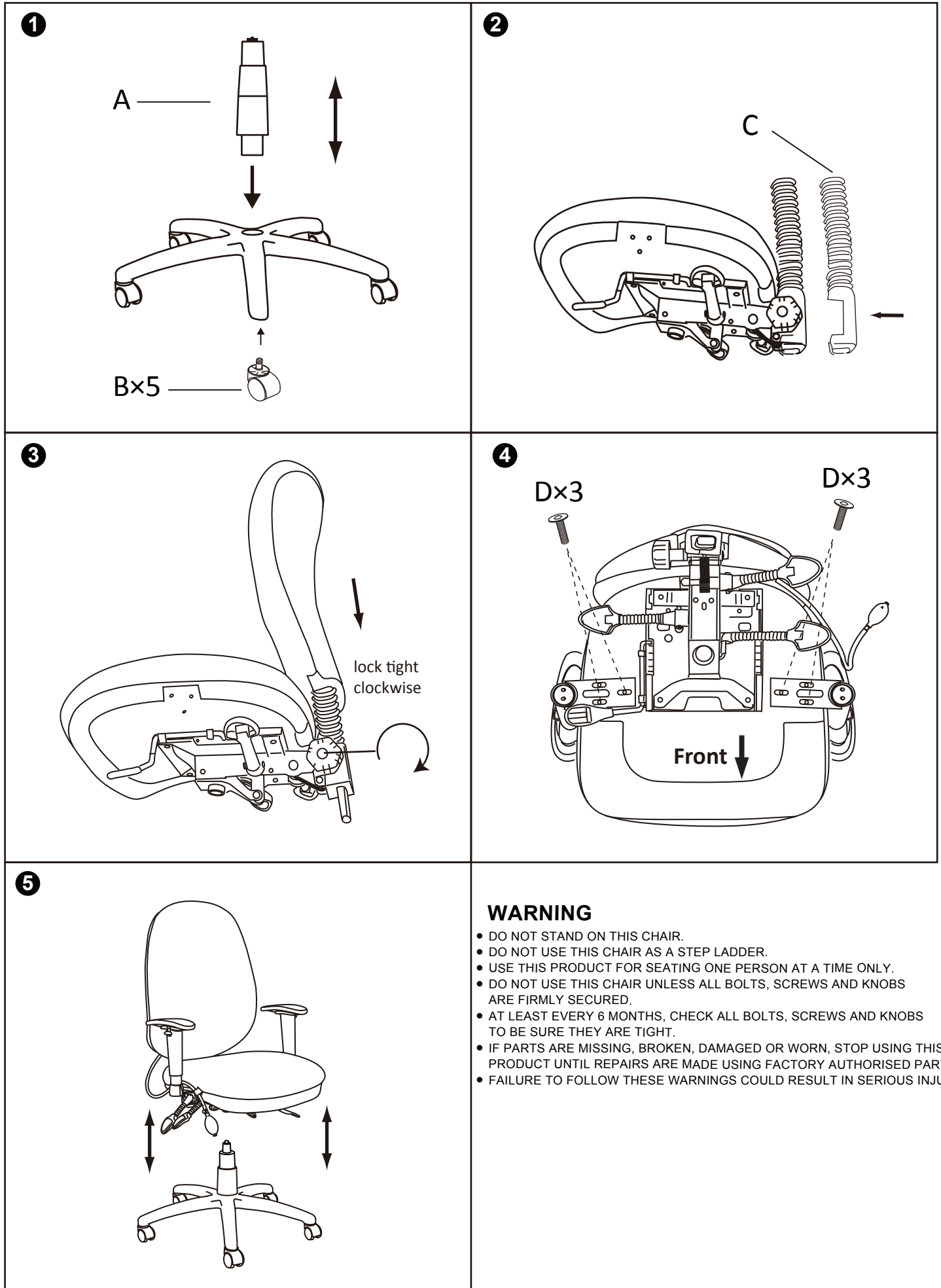
ACTF001

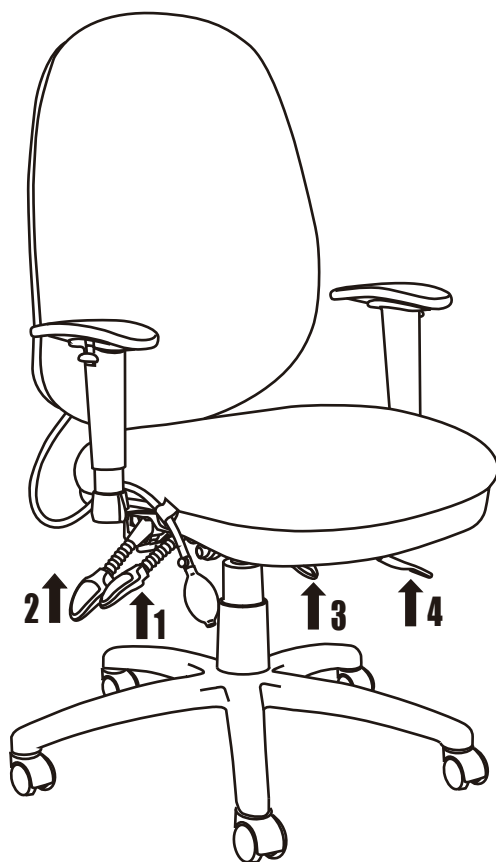
PLEASE NOTE:

The screws "D" are pre-inserted into their correct holes to prevent them from being lost in transit. Please remove them before assembly using the allen key provided.

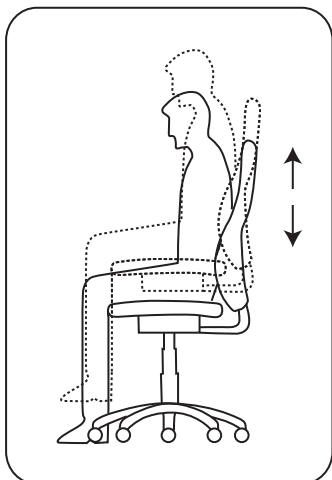


**Do not tighten bolts fully until you have completed assembly.
DO NOT USE A POWER DRILL TO TIGHTEN THE SCREWS.
TIGHTEN BY HAND WITH THE ALLEN KEY PROVIDED.**

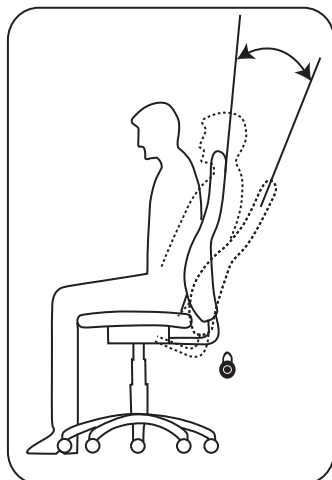




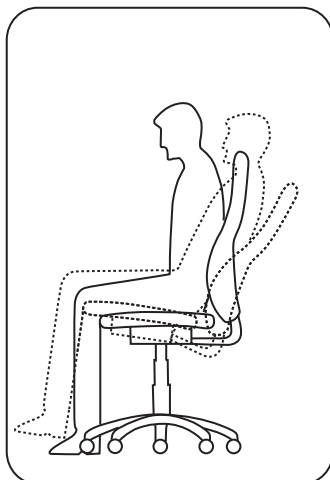
1



2



3



4

